



AAKAR
MILLENNIUM



2,3,4 & 6 BHK HOMES

About Aakar Millennium

Aakar Millennium stands as an epitome of luxury living, seamlessly blending modern aesthetics with thoughtful design. Nestled in a prime location, this residential project is a testament to sophistication and comfort. The architecture is a harmonious blend of contemporary style and timeless elegance, creating an ambiance that resonates with a sense of exclusivity.

As you enter the gates of Aakar Millennium, you are greeted by meticulously landscaped surroundings, offering a tranquil retreat from the hustle and bustle of city life. The project boasts a range of meticulously designed residences, each crafted with an unwavering commitment to quality and attention to detail. From spacious apartments to lavish penthouses, every living space reflects a commitment to providing residents with an unparalleled lifestyle experience.

Aakar Millennium prioritizes the well-being of its residents, offering a host of amenities that cater to both recreation and relaxation. Residents can indulge in the serene ambiance of lush green spaces, or stay active at the state-of-the-art fitness centre. The project also features community spaces where neighbours can come together, fostering a sense of camaraderie and community.

Security and convenience are paramount at Aakar Millennium. The project is equipped with advanced security systems to ensure a safe and secure living environment. Additionally, proximity to essential amenities such as schools, shopping centres, and healthcare facilities adds to the convenience of daily life, making Aakar Millennium a coveted address for those seeking a perfect balance between luxury and practicality.

In conclusion, Aakar Millennium stands as a beacon of opulence and comfort in the realm of residential living. With its visionary design, top-notch amenities, and a commitment to creating a thriving community, it sets a new standard for modern living, redefining what it means to call a place home.

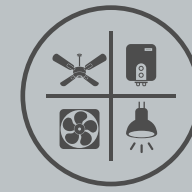




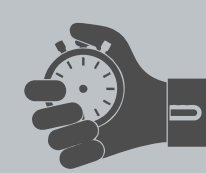
TYPICAL FLOOR PLAN



Excellent location



Fully Fitted*



Possession in time



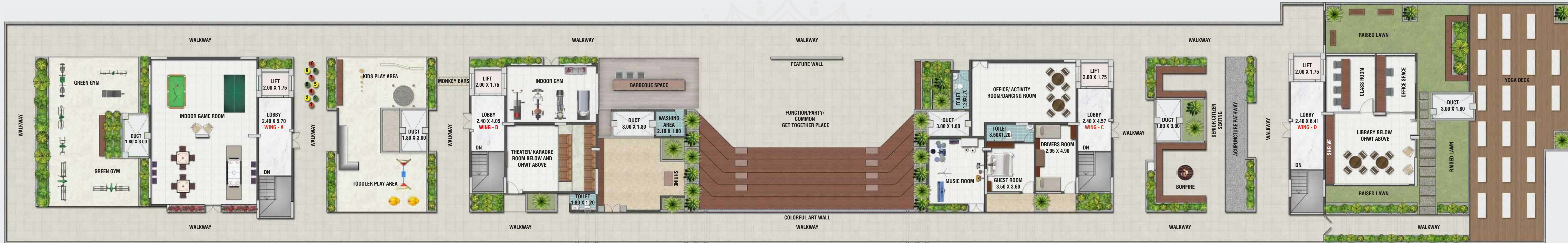
Reliable Construction



Transparency in Business



Safe Homes



TERRACE FLOOR PLAN

Clouds at your feet and the wind in your hair, you now own the sky! 25,000 sq.ft. plush Sky Club elevated at 80 ft. filling you up with an alluring experience of resort living within the gates, that you wouldn't wish to go home.

Relax or unwind or just gaze, the sky embraces you with its magnificence. Plunge into the blues of the horizon in the infinity swimming pool, or just rejuvenate your aura. Make healthy living your lifestyle at the sky deck gymnasium or clink your glasses and raise a toast to memories of revelry at the Lounge. The Sky Club transports you to a limitless sphere of glory where life is a notch above.

Live Life in Style
with world-class resident amenities!



Lush Green Terrace Area



Library



Music Room



Senior Citizen Seating



Banquet Hall



Mini Theatre



Grand Reception Foyer



Gymnasium



Business Lounge



Open Yoga Deck



Indoor Sports



Kids Play Area



EV Charging Station

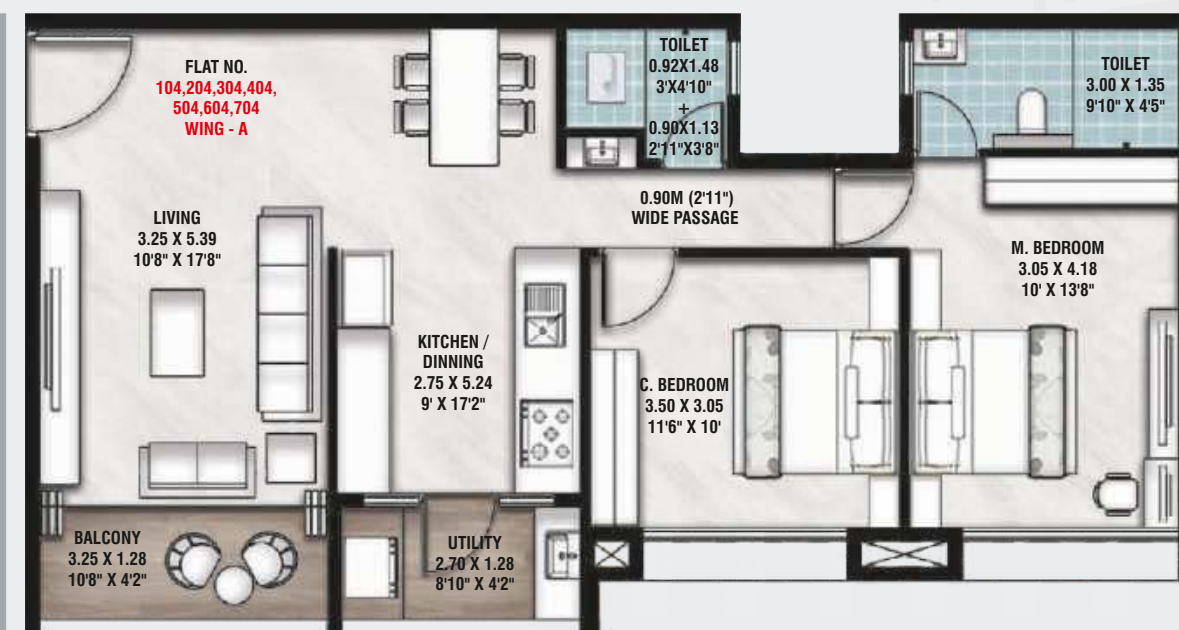


Jogging Track

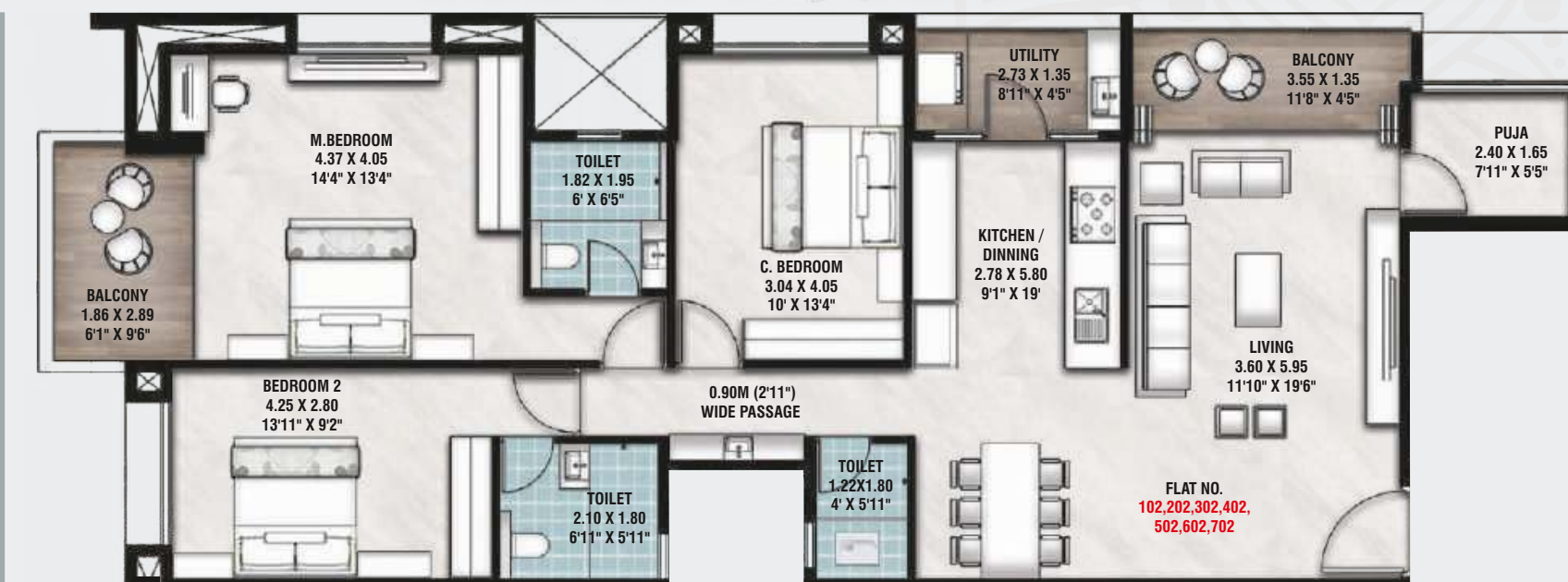
A & D Wing
2 BHK Cut Section



A Wing
3 BHK with puja Cut Section



A & D Wing
2 BHK Floor Plan

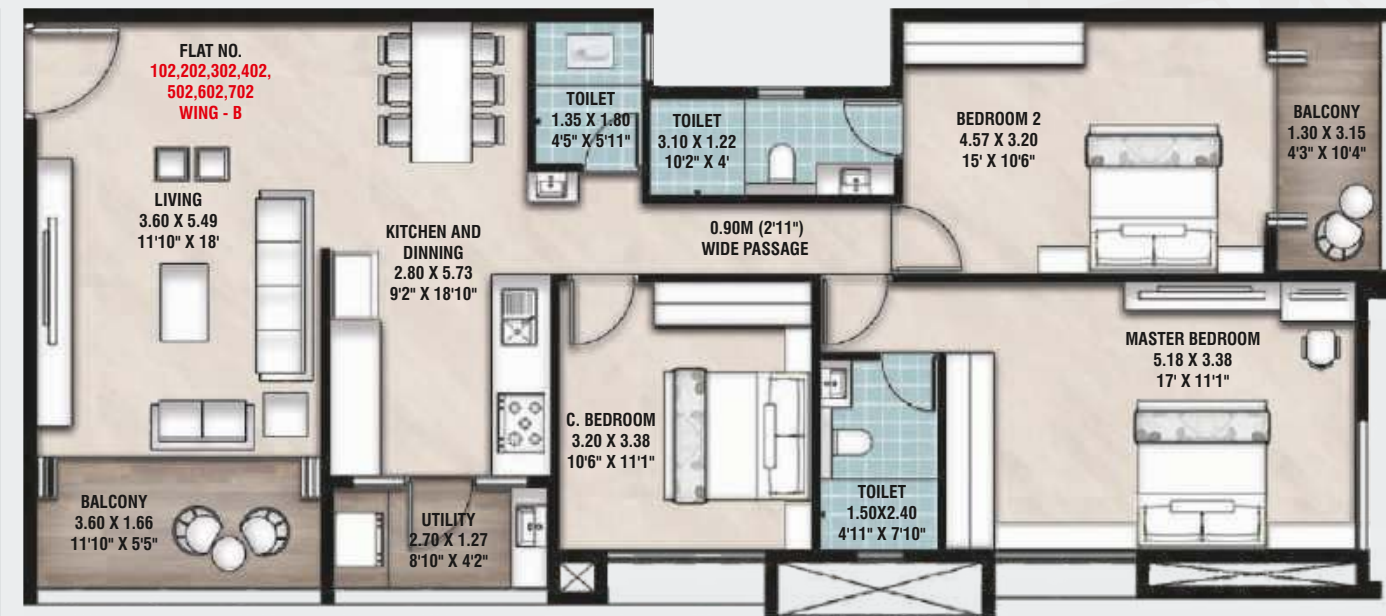


A Wing
3 BHK with puja Floor Plan

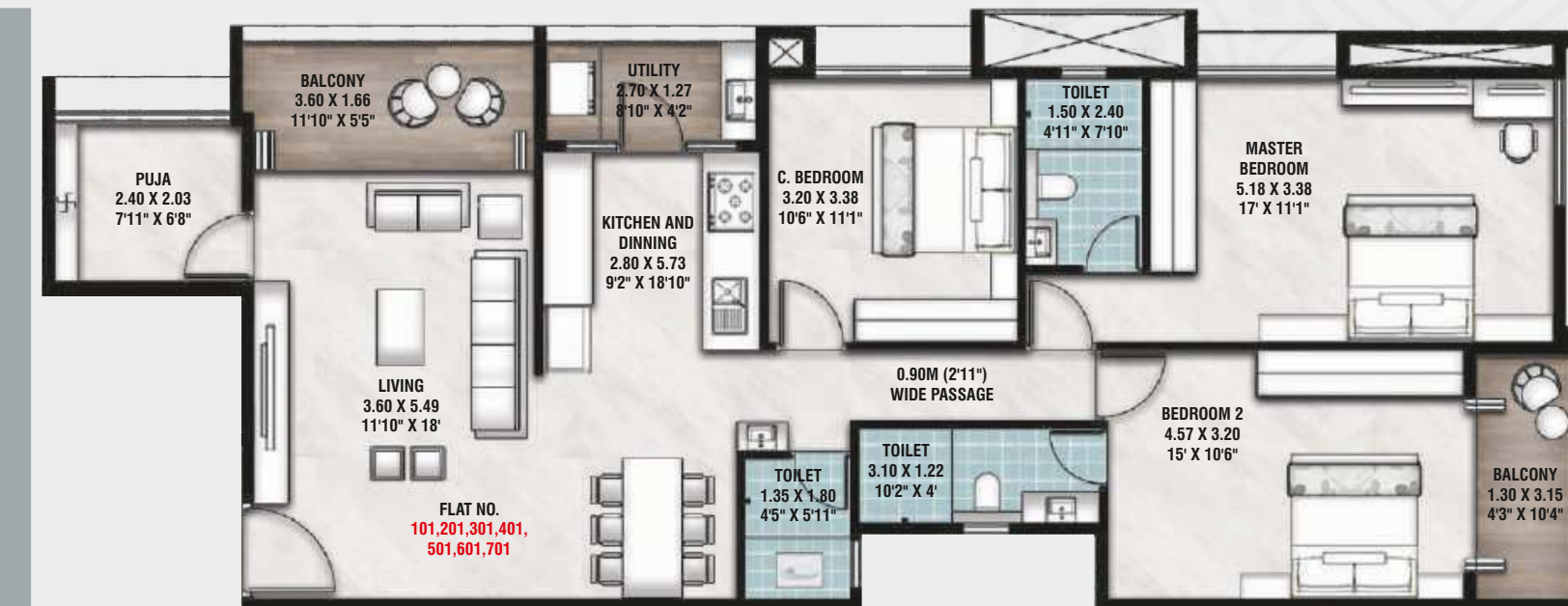
B & C Wing
3 BHK with puja Cut Section



D Wing
3 BHK with puja Cut Section

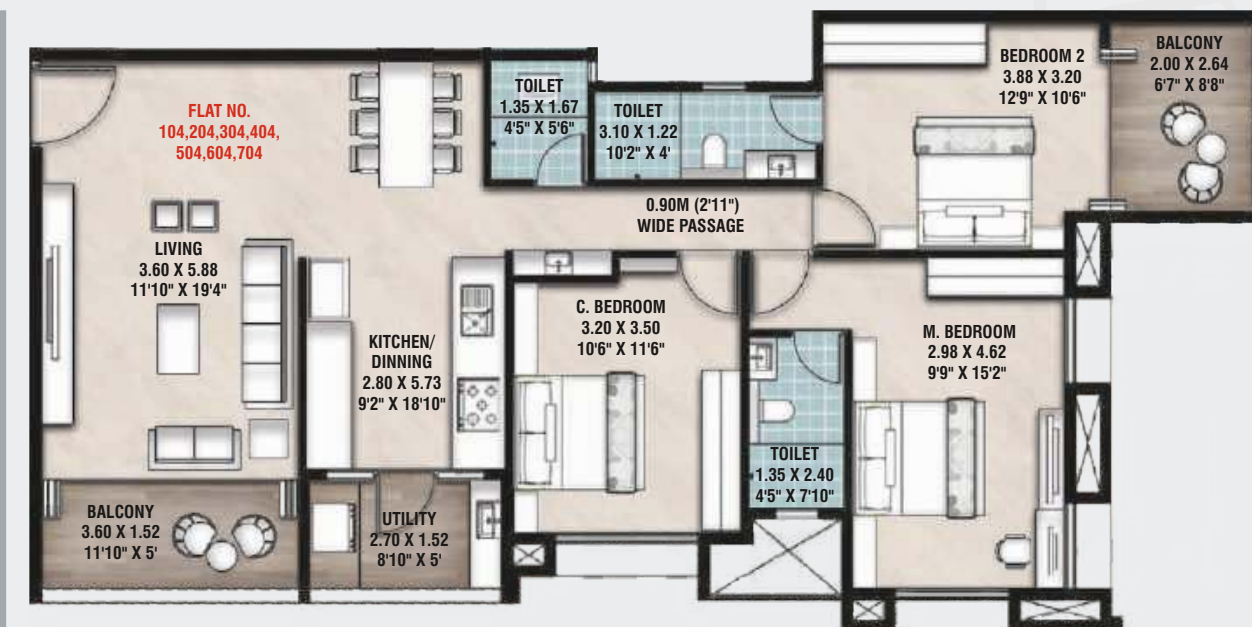


B & C Wing
3 BHK with puja Floor Plan



D Wing
3 BHK with puja Cut Section

D Wing 3 BHK Cut Section



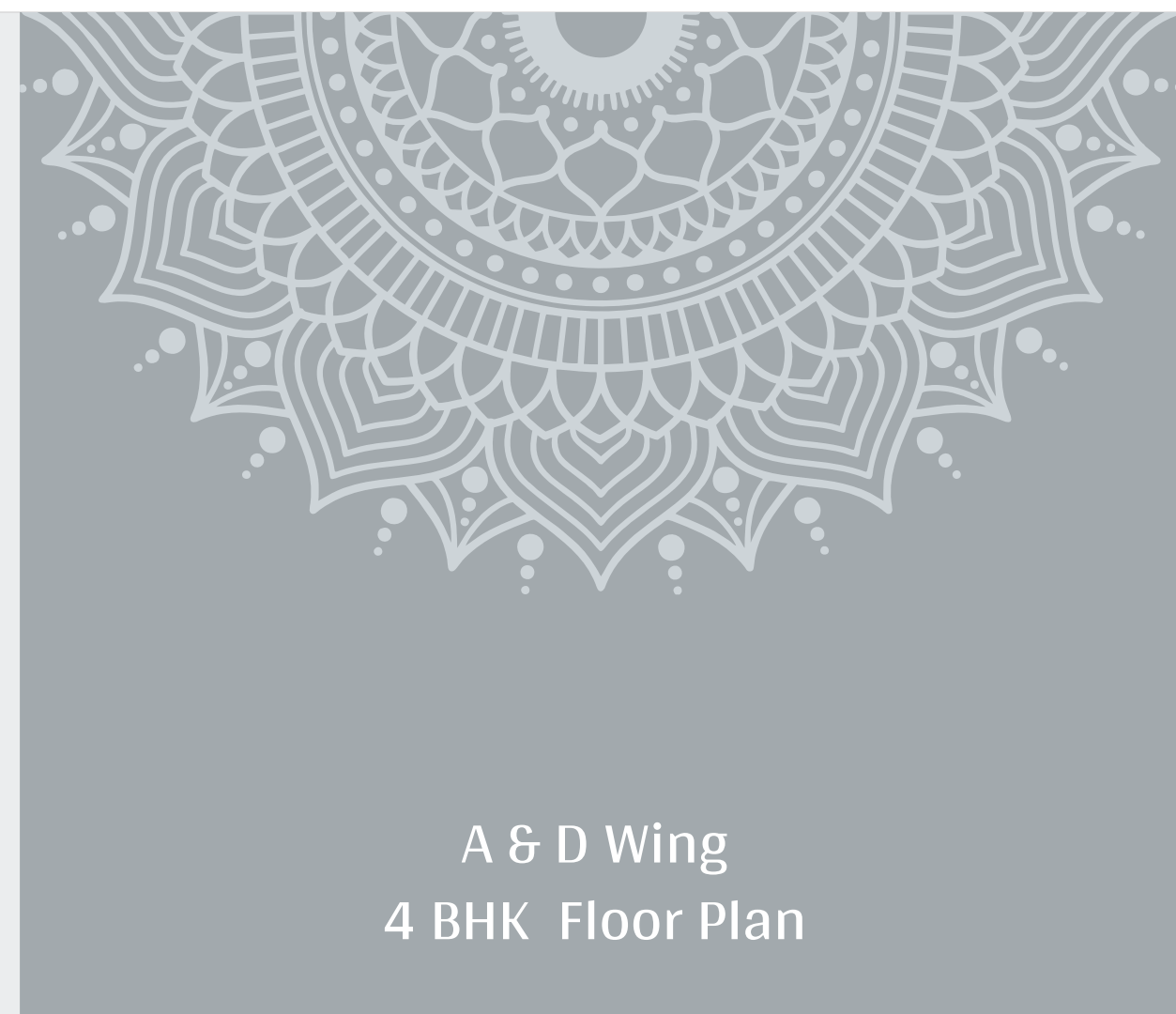
D Wing 3 BHK Floor Plan

For Those Who Need Bigger Homes

We Have Come Up With A Ultra

Spacious And Gigantic

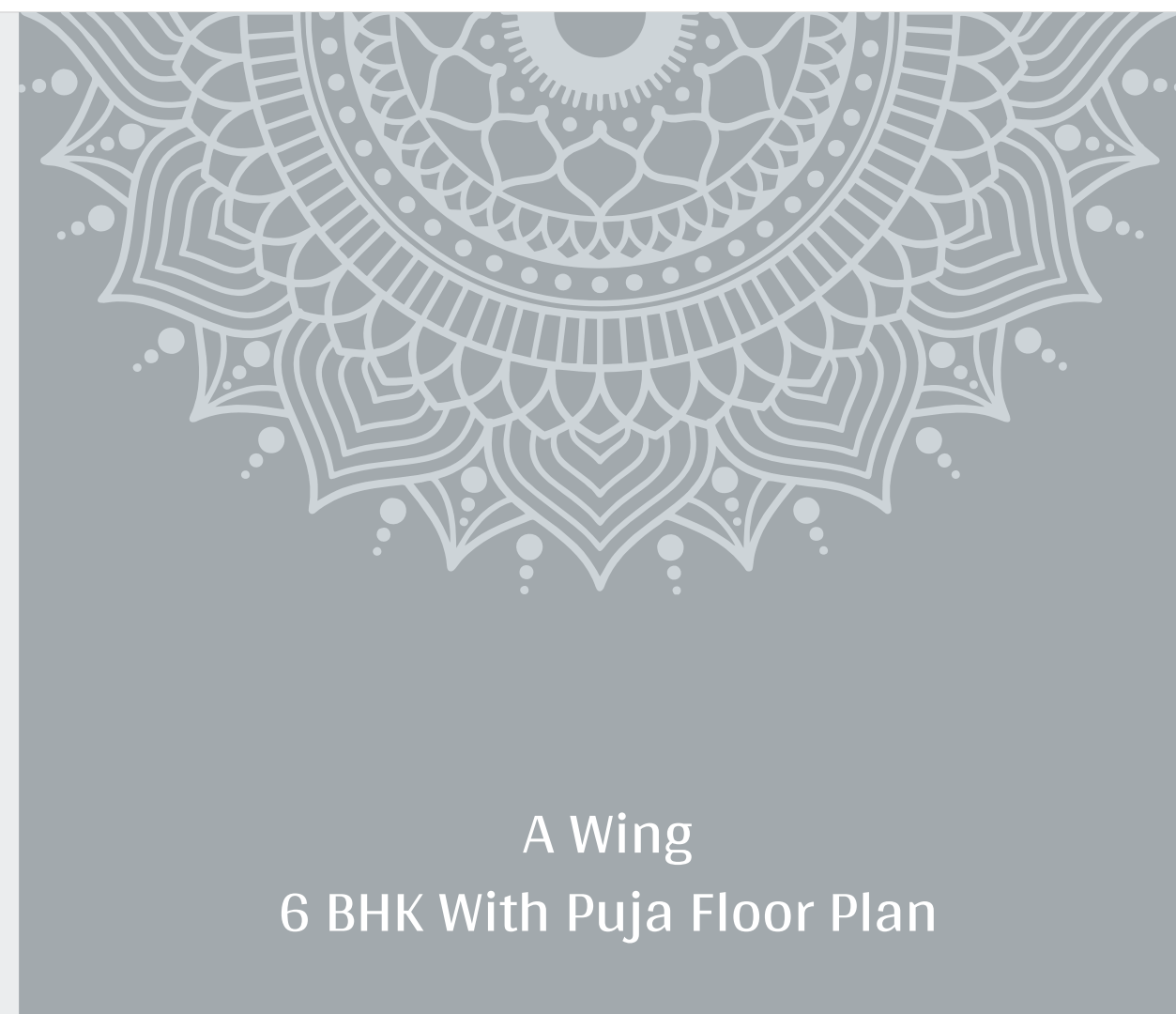
4 & 6 BHK Ultra Spacious Homes



A & D Wing
4 BHK Floor Plan



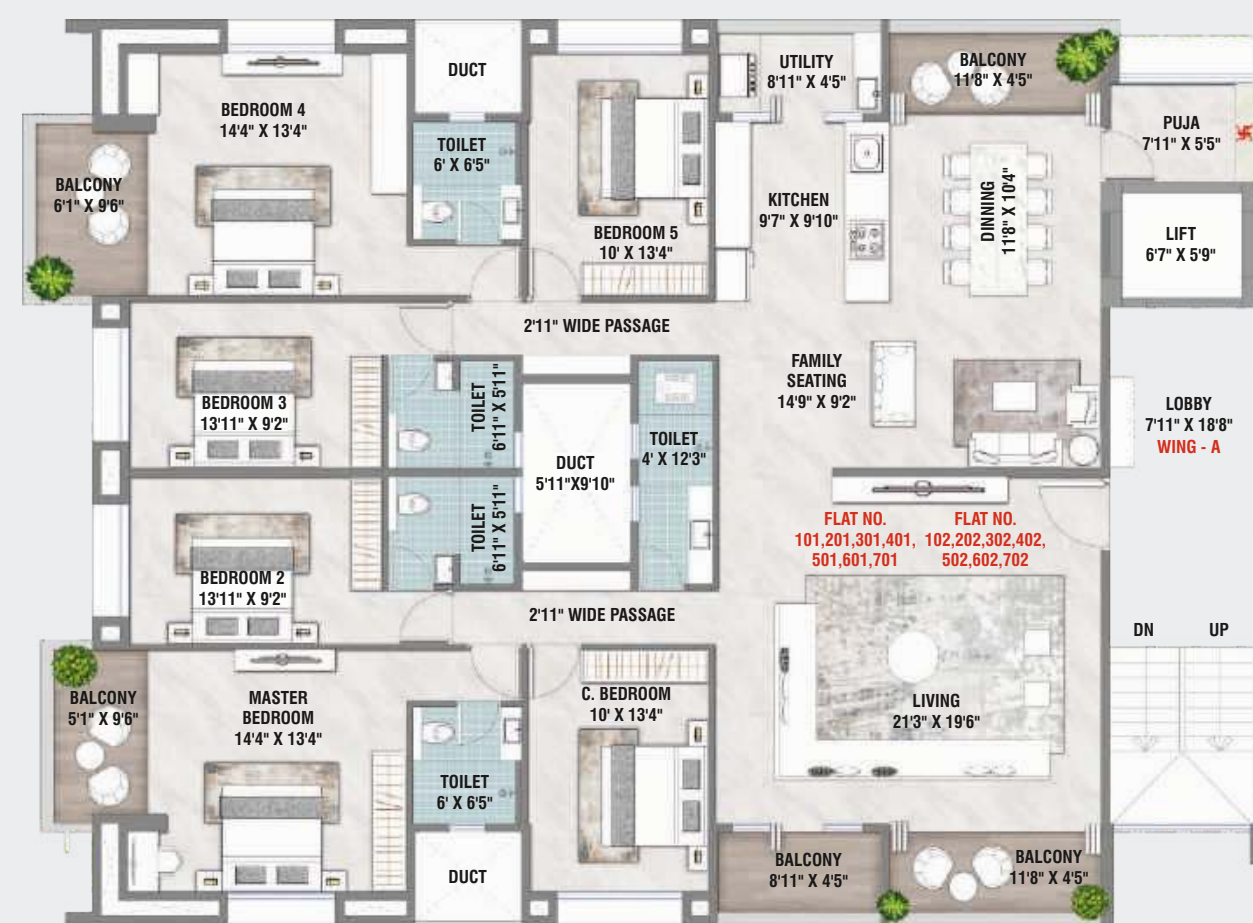
A & D Wing
4 BHK Cut Section



A Wing
6 BHK With Puja Floor Plan



A Wing
6 BHK With Puja Cut Section

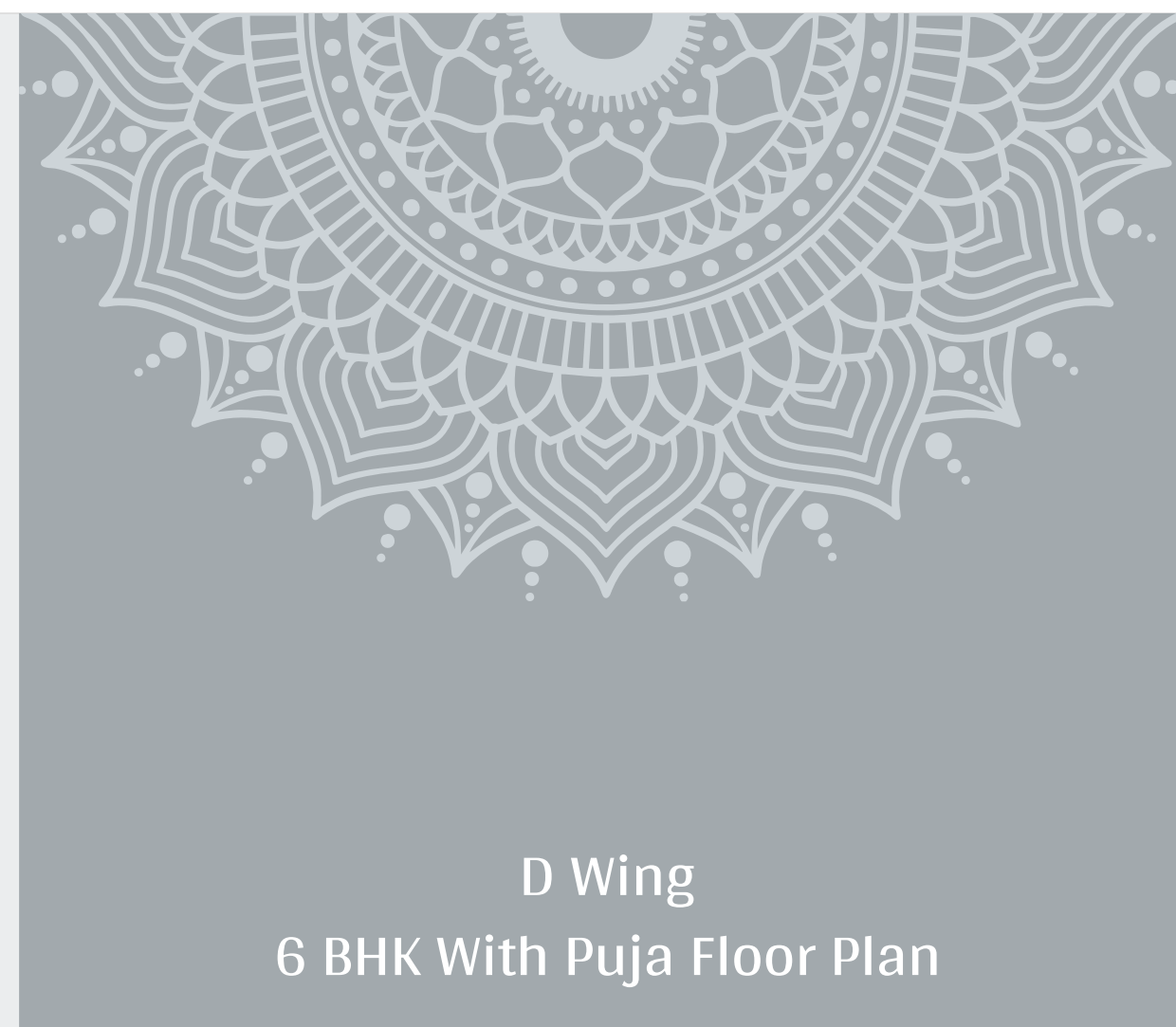




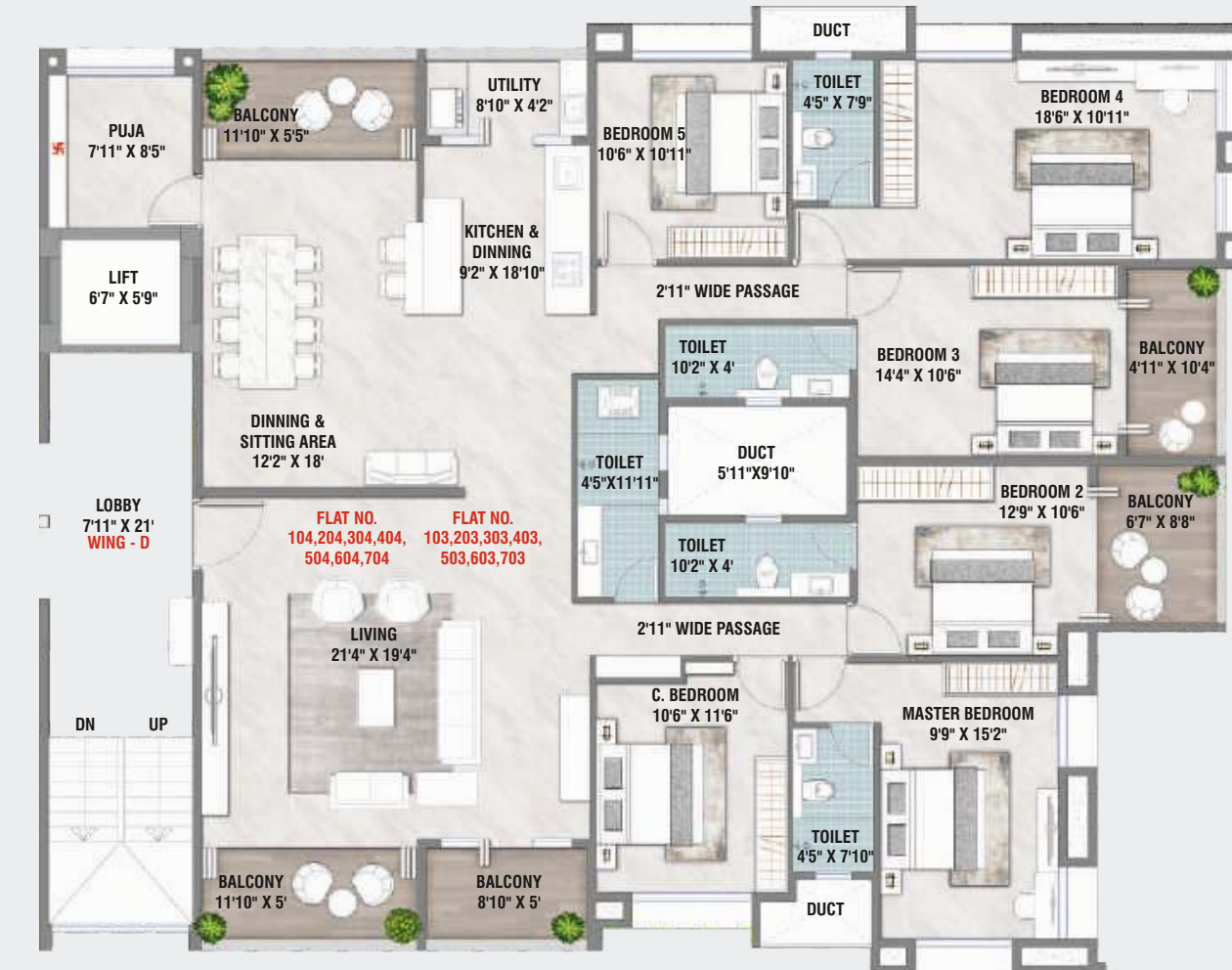
B & C Wing
6 BHK With Puja Floor Plan



B & C Wing
6 BHK With Puja Cut Section



D Wing
6 BHK With Puja Floor Plan



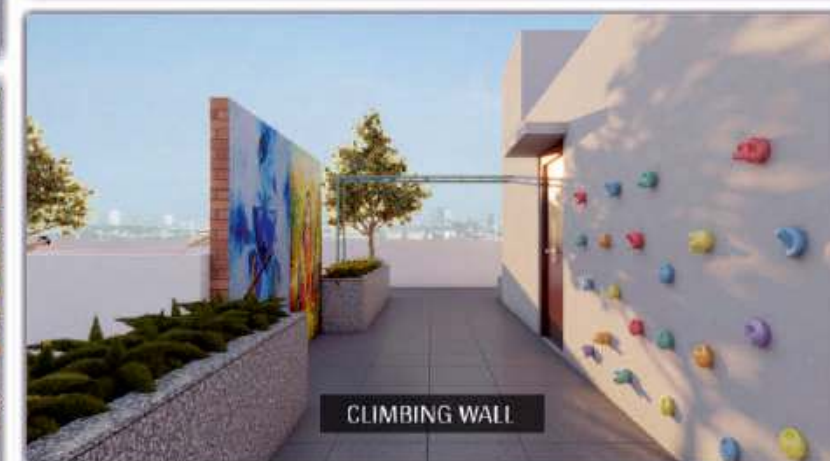
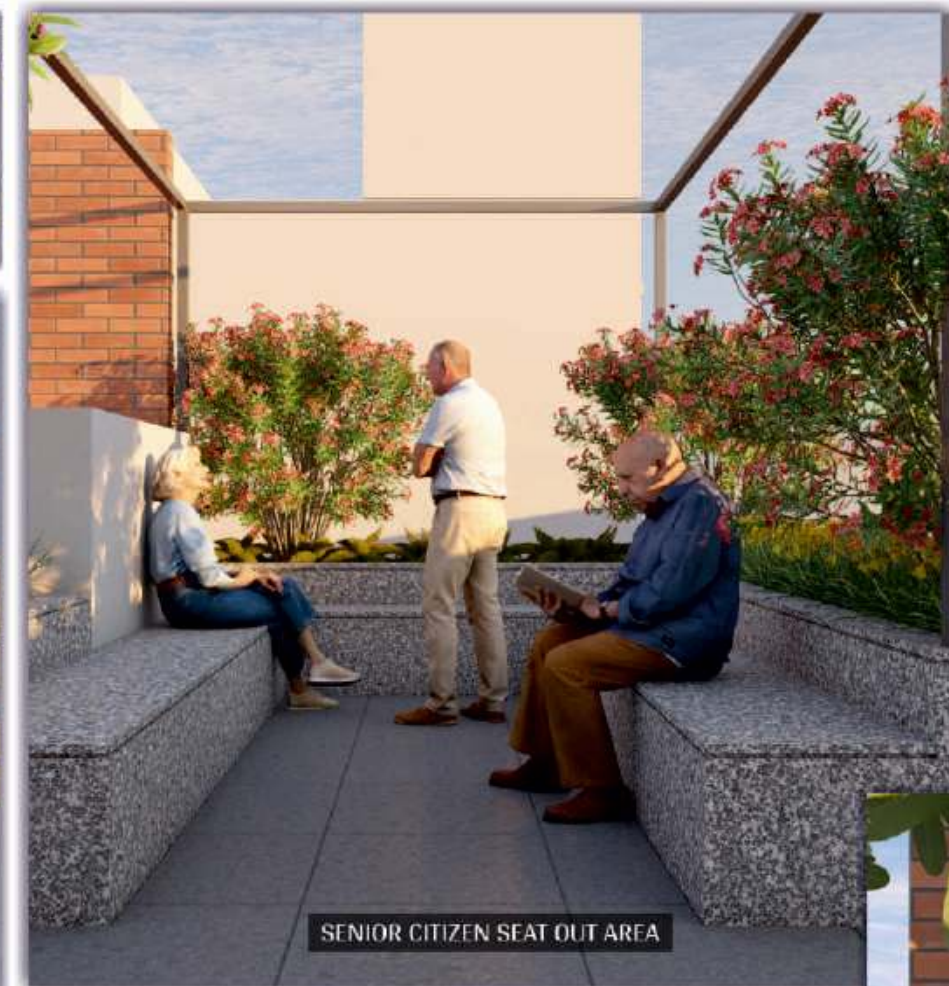
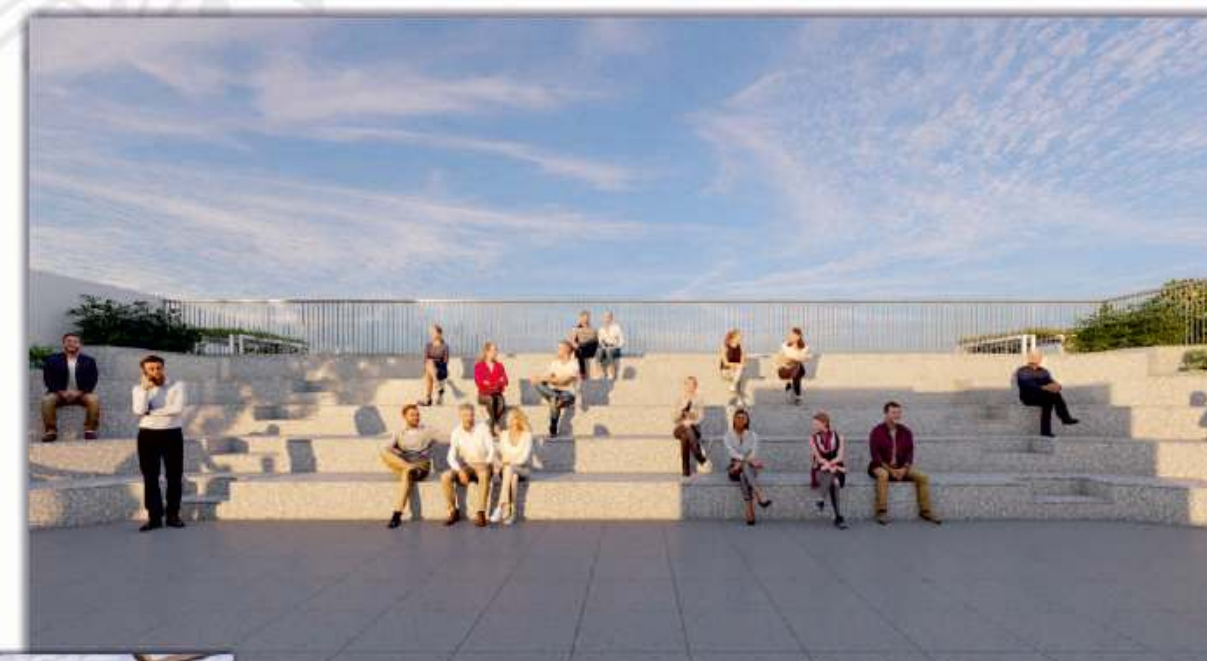
D Wing
6 BHK With Puja Cut Section



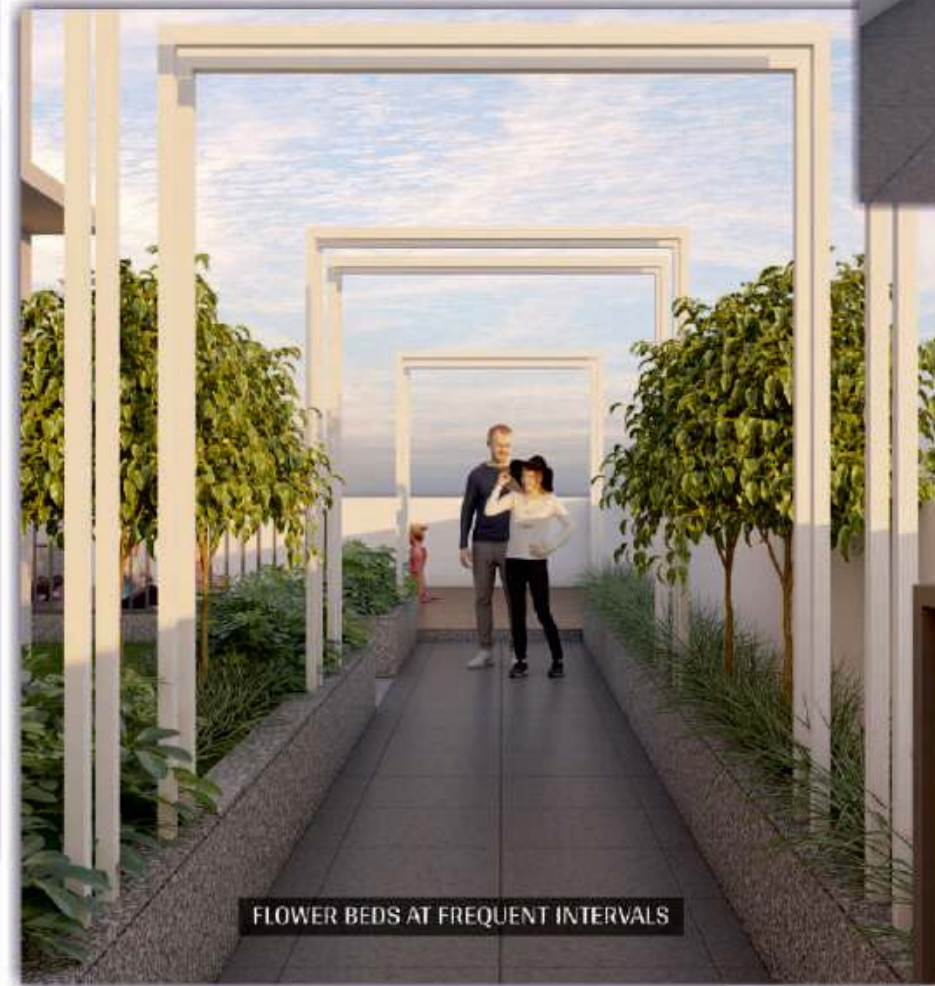
OPEN TO SKY TERRACE AMENITIES



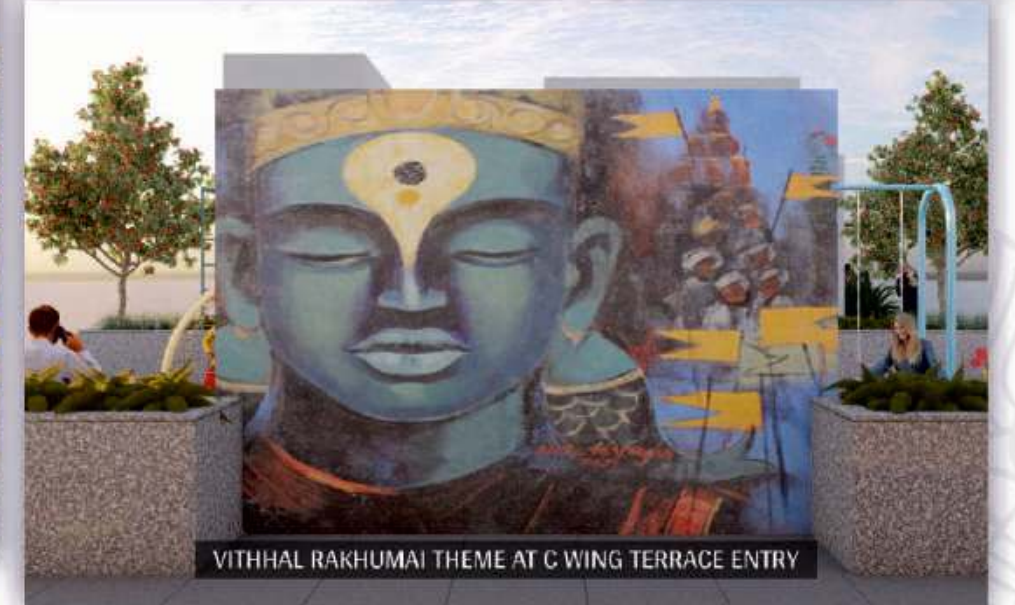
OPEN TO SKY TERRACE AMENITIES



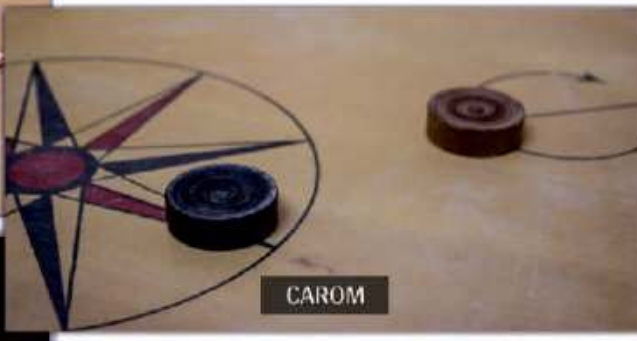
OPEN TO SKY TERRACE AMENITIES



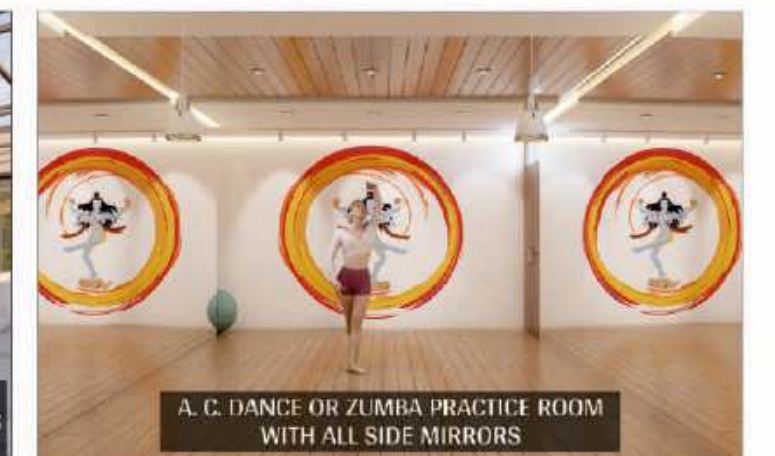
OPEN TO SKY TERRACE AMENITIES



COVERED TERRACE AMENITIES



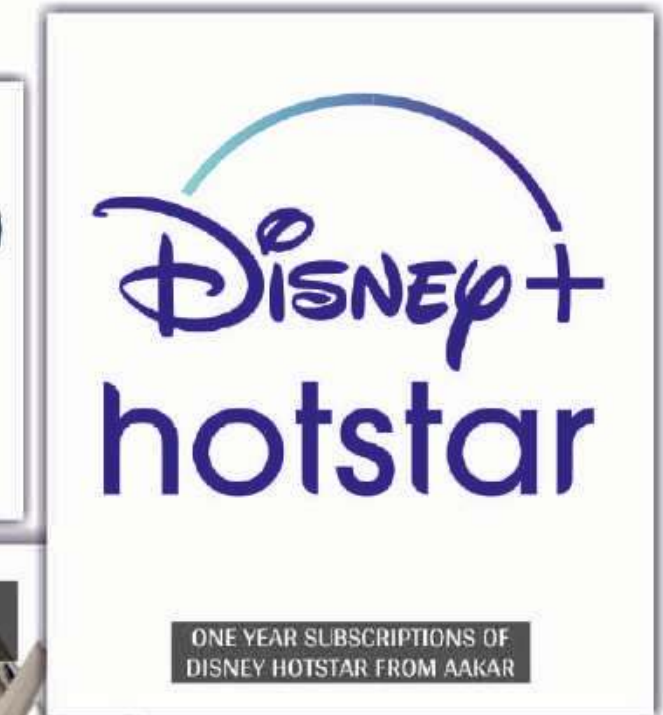
COVERED TERRACE AMENITIES



COVERED TERRACE AMENITIES



COVERED TERRACE AMENITIES



INTERNAL HOME AMENITIES



FLAT HIGHLIGHTS

- PUJA ROOM FOR PARTICULAR UNITS.
- VASTU CONSIDERED PLAN.
- S. S. GAS PIPE CONN. TILL UTILITY
- (MNGL REACHES OUR AREA MNGL CONNECTION TILL UTILITY).
800 MM X 1800 MM FLOOR TILE THROUGH OUT THE FLAT.
- S.S. RAILING WITH TOUGHENED GLASS FOR ALL BALCONIES.
- ONLY KITCHEN BALCONY WILL BE WITH WALL FOR PRIVACY
NEED OF ALL WHO ARE WORKING IN UTILITY.
- WOODEN FINISH CEILING AT ALL BALCONIES EXCEPT UTILITY.



FLAT ENTRANCE LOBBY

- DESIGNER NAME PLATE.
- VIDEO DOOR PHONE AT ENTRY DOOR.
- SEPARATE SHOE RACK FOR EVERY HOME.
- WELL DECORATED ENTRY DOOR FOR EVERY INDIVIDUAL HOME.



DOOR / WINDOW

- DIGITAL MORTISE LOCK FOR KEYLESS ENTRY FOR MAIN DOOR.
- 7' 4" X 3' 8" BOTH SIDE LAMINATED FLUSH MAIN DOOR.
- MAIN DOOR WILL BE OF 45 MM THICKNESS.
- ALL DOORS WILL BE OF 35 MM THICKNESS.
- ALL DOOR FRAMES WILL BE PLY FINISHED DOOR FRAMES.
- ALL DOORS WILL BE BOTH SIDE LAMINATED DOORS.
- ALL DOORS WILL COME WITH MORTISE LOCK.
- RUBBER PIPING TO ALL DOOR FRAMES TO AVOID NOISE.
- BOTH SIDE LAMINATED FLUSH DOORS FOR BATHROOM WITH MORTISE LOCK.
- ALL SIDE GRANITE FRAME TO ALL WINDOWS.
- 3 TRACK DOWELL WINDOWS WITH MOSQUITO NET.
- POWDER COATED FRENCH DOORS WITH MOSQUITO NET FOR ALL BALCONIES.



ELECTRICAL

- TWIN SWITCHES FOR LIGHT AND FAN FOR ALL BEDROOM.
- WIFI ROUTER POWER POINT AT CENTER OF FLAT WITH DATA CABLE SLEEVE WITH CABLE.
- A. C. POWER POINT FROM AAKAR ONLY TO ALL BEDROOMS AND HALL ALSO.
- ADDITIONAL PLUG POINT IN EVERY ROOM FOR ALEXA.



KITCHEN / UTILITY

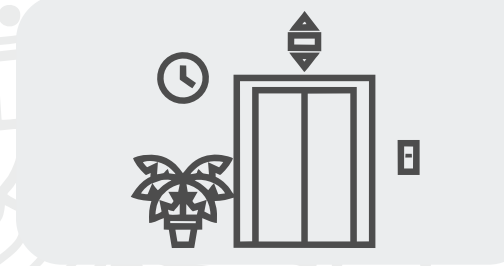
- PARALLEL KITCHEN PLATFORM FOR BETTER SPACE UTILIZATION.
- ADDITIONAL KITCHEN PLATFORM FOR MIXER AND OVEN WITH
RESPECTIVE ELECTRICAL PROVISION.
- PLUMBING AND ELECTRICAL PROVISION FOR WATER PURIFIER.
- SEPARATE SPACE FOR REFRIGERATOR WITH POWER POINT.
- TILES TILL CEILING IN KITCHEN.
- PLAIN WHITE TILES BELOW KITCHEN PLATFORM.
- BEAUTIFUL COLORED ARTIFICIAL GRANITE KITCHEN PLATFORM.
- 600 MM X 1200 MM TILES IN KITCHEN.
- WASHING MACHINE'S PLUMBING PROVISION IN UTILITY.
- ADDITIONAL SINK PROVISION IN UTILITY.
- INVERTER ELECTRICAL PROVISION IN UTILITY.
- WASHING MACHINE'S ELECTRICAL PROVISION IN UTILITY.
- EXHAUST FAN ELECTRICAL PROVISION IN KITCHEN.
- CHIMNEY ELECTRICAL POINT IN KITCHEN.



BATH / TOILET

- TILES TILL CEILING IN BATHROOM.
- 600 MM X 1200 MM TILES IN BATHROOM.
- GRANITE DOOR FRAME FOR BATHROOM DOOR FRAME.
- STOP COCK FOR BATHROOM FOR EMERGENCY NEEDS RELATED TO BATHROOM.
- EXHAUST FAN PROVISION IN ALL BATHROOM.
- GEYSER'S ELECTRICAL & PLUMBING PROVISION IN ALL BATHROOM.

COMMON BUILDING AMENITIES



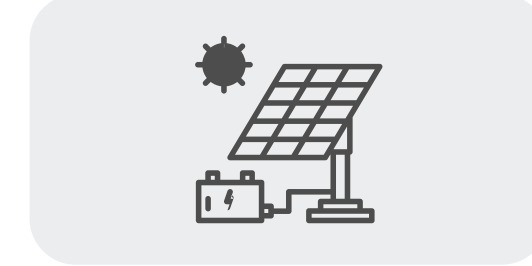
Highly Decorated Entrance
Lobbies At All Wings



RFID Access To Entry Lobby



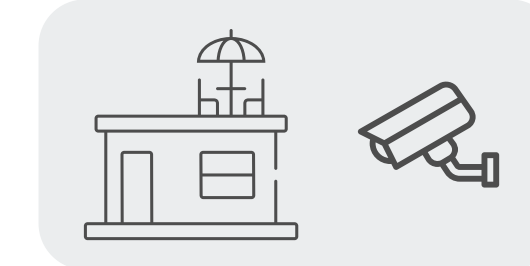
Neatly And Elegantly Designed Lobby
With False Ceiling On Every Floor
With Proper Light Arrangements



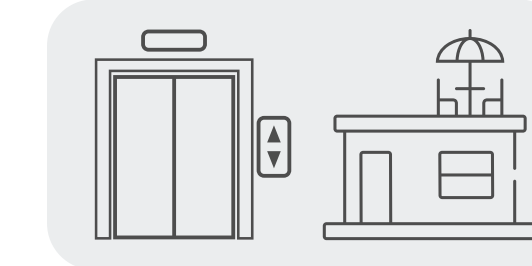
Solar Net Meter For
All Common Area
(Till Govt Scheme Is There)



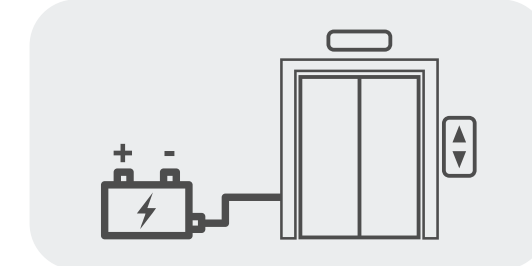
Separate CCTV Camera
Provision For Parking Area



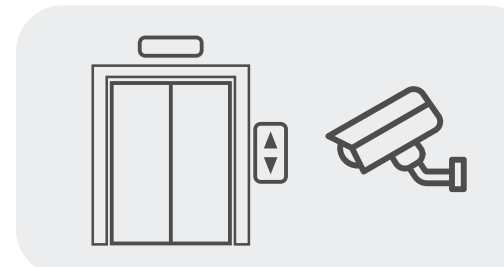
Separate CCTV Camera
Provision For Terrace Area



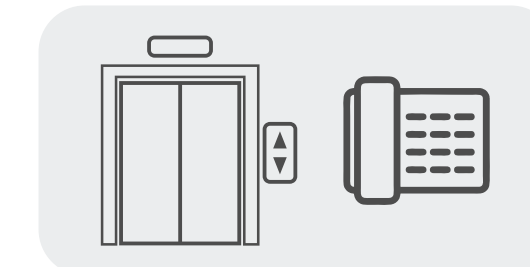
All Wings Lifts Will Be
Till Terrace Floor



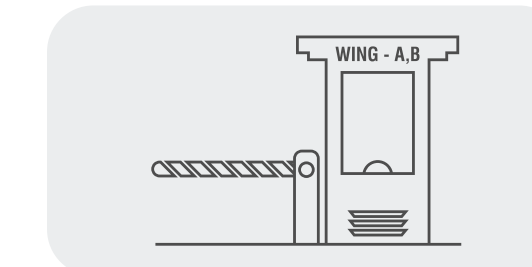
All Wing Lifts Will Be With Separate
Battery Back Up All Wings Lift Will
Be With Auto Door Closure Feature



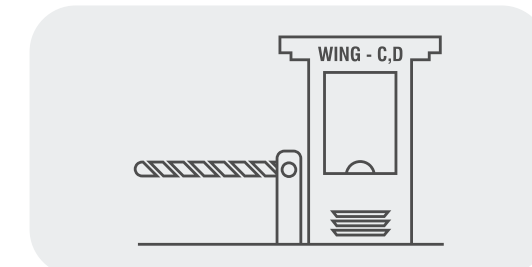
All Wing Lift Will Have
CCTV In Lift



Phone In Lift For Communication
In Case Of Emergency



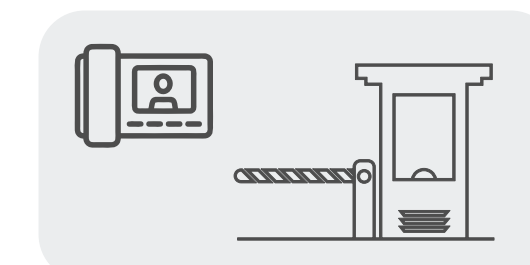
Separate Security Cabin At
A Wing And B Wing Entry



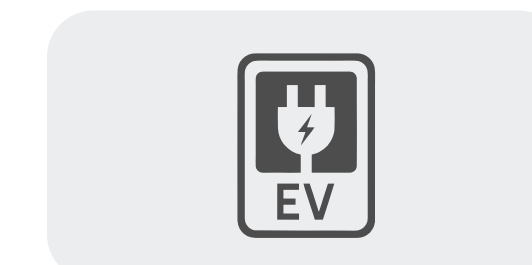
Separate Security Cabin At
C Wing And D Wing Entry



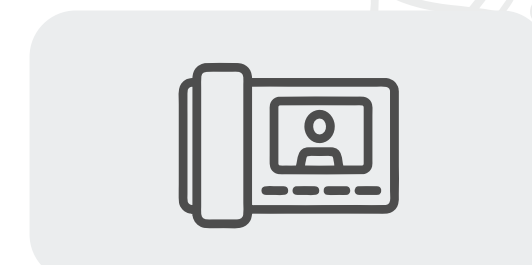
Separate Battery Back Up For
Common Passage Area And
Parking Area Lights



Intercom From Flats To Security



Two Common Bike EV Charging
Point For Every Wing
(In Total 8 EV Charging Points)



Intercom From Flats To Flats

why aakar

DISTANCE CHART

PRE SCHOOLS

• Small Steps Nursery	0.90 Km
• Little Wonders	1.30 Km
• Kinder Kids	2.10 Km
• Genius Tots	2.20 Km

SCHOOLS

• Wisdom High International School	1.30 Km
• Bhonsala Military School	1.70 Km
• Kilbil and Don Bosco	2.40 Km
• Ebenezer International School	3.30 Km
• Frawashi International	3.60 Km
• Ashoka (Chandshi)	4.10 Km

COLLEGES

• Bhonsala Military College	1.80 Km
• NDMVP College	2.70 Km
• RYK, HPT / BYK, SMRK College	2.90 Km
• Motiwala Homeopathy College	3.80 Km
• V.N.Naik College	4.30 Km
• KTHM	4.40 Km
• JIT Engineering College	7.30 Km
• YCMOU University	7.40 Km

HOSPITAL

• Shri Guruji Hospital	1.50 Km
• Six Sigma Hospital	1.80 Km
• NIMS Hospital	2.60 Km
• Kaushalya Hospital	2.80 Km
• Wadgaonkar's Hospital	3.20 Km
• Leelawati Hospital	3.40 Km

SWEET AND GENERAL STORES

• Madhur Sweets	0.45 Km
• Mataji Super Market	0.50 Km
• V Mart	0.60 Km
• Aashish General Stores	1.40 Km
• Nilesh Super Market	1.90 Km

MALLS

• Star Bazar Mall	2.80 Km
• Shradhha Mall	3.40 Km
• City Center Mall	4.40 Km
• Pinnacle Mall	6.10 Km

VEGETABLE MARKET

• At Canal Road	0.65 Km
• At Akashwani Tower	2.20 Km
• At College Road Opp Shradhha Mall	3.20 Km

GYMS

• 24seven Fitness Gym	1.30 Km
• Iron Sports	1.40 Km
• Intense Gym	2.10 Km
• Gravity Gym	2.10 Km
• ABS Gym	2.40 Km
• Reflexion Gym	2.90 Km

BANKS & ATM

• HDFC Bank	0.50 Km
• ICICI Bank	0.60 Km
• Kotak Mahindra Bank	0.60 Km
• Union Bank	1.20 Km
• Indus Bank	1.80 Km
• Citi Bank	1.90 Km

RESTAURANTS

• Divtya Budhalya	0.70 Km
• Veg Aroma	1.00 Km
• Spice Route	1.20 Km
• The Callisto	1.30 Km
• Origin	1.50 Km
• Hotel Blue Leaf	1.50 Km
• Curry Leaves	1.70 Km
• Majhali	2.20 Km





CINEMA THEATER

• PVR College Road	3.5km
• PVR City Centre Mall	4.4km

FAMOUS HIGH LIGHTED LOCATION

• Navashya Ganapati	1.30 Km
• Someshwar Mandir	3.10 Km
• Sadhana Misal	3.90 Km
• Balaji Mandir	4.40 Km
• Sula Wine	8.30 Km
• Gangapur Dam Boat Club	10.0 Km
• Kashyapi Dam	17.0 Km
• Grape County	18.0 Km

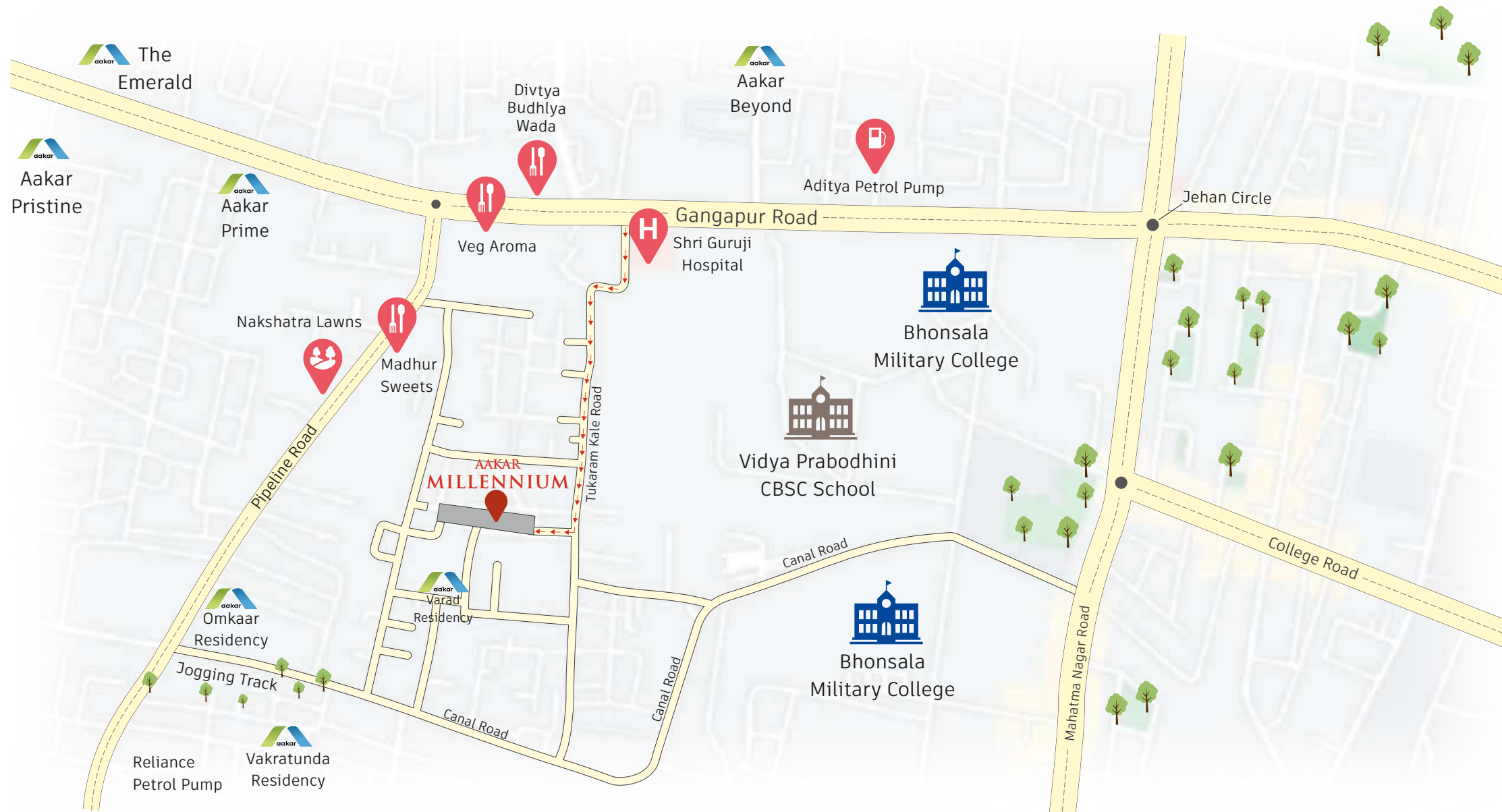
BRANDS AAKAR PREFER USING

 experience bathing Sanitary Fitting	 Lift	 Switches	 ANTI-THEFT ENGINEERING Locks	 Paints
 Gypsum	 Wires	 enhancing vision CCTV	 Tiles	 Blocks
 प्रीमियम सीमेंट Cements	 ENTERPRISES French Doors	 THE POWER OF STEEL Steel	 WATERPROOFING EXPERT Water Proofing	 Pipes

BANKS WE PREFER

 THE BANKER TO EVERY INDIAN		 भारतीय जीवन बीमा निगम LIFE INSURANCE CORPORATION OF INDIA	
			

Note: Brands shown above are for reference only and are the brands which we are going to prefer. Brands above are subject to change as per the availability and financial viability and their choices will be the sole discretion of developer only.



LOCATION MAP

**Not In scale only for location purpose*

Site Address

Kale Nagar, Behind Madhur Sweets,
Pipeline Road, Gangapur Road, Nashik.



MAHARERA Registration No. P51600030443
Available at website : maharera.mahaonline.gov.in

A Project By



MEMBER OF
CREDAI
Confederation of Real Estate
Developers' Associations of India
NASHIK METRO

Call : 744 777 8584 / Mail : aakargroupac@gmail.com

ARCHITECT
Ar. Priyanka Gupta

RCC CONSULTANT
Er. Milind Rathi

LEGAL ADVISOR
Adv. Manik Bodke